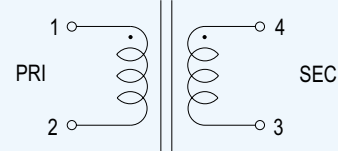
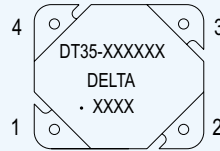


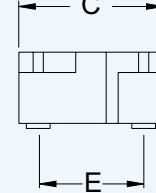
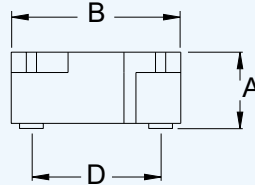


Telecommunication COMMON MODE CHOKE Transformers

DT35-8002
DT35-8013



WHITE DOT ON PIN 1
XXXX : DATE CODE



DIMENSIONS IN mm

A	B	C	D	E	F	G
6.35 MAX.	10.16 MAX.	8.76 MAX.	7.62 ±0.15	6.22 ±0.15		

ELECTRICAL CHARACTERISTICS

	DT35-8002	DT35-8013
T.R	(N1:N2): 1:1±2% @20KHz 1V	(N1:N2): 1:1±2% @20KHz 1V
L	N1: 4.7mH ±30% @100KHz 20mA	N1: 4.7mH ±30% @100KHz 20mA
C.M ATTENYATION	40dB Typ. @100KHz 51dB Typ. @1MHz 38dB Typ. @10MHz	40dB Typ. @100KHz 51dB Typ. @1MHz 38dB Typ. @10MHz
D.C.R	N1: 1.0 ΩMax. N2: 1.0 ΩMax.	N1: 1.0 ΩMax. N2: 1.0 ΩMax.
HI-POT	500 VAC 2 SEC	500 VAC 60 SEC
SCHEMATIC	1	1

DELTA ELECTRONICS, INC.

(TAOYUAN PLANT CPBG) 31-1, SHIEN PAN ROAD, KUEI SAN INDUSTRIAL ZONE, TAOYUAN SHIEN, TAIWAN, R.O.C.

TEL: 886-3-3626301 FAX: 886-3-3618901
http://www.deltaww.com