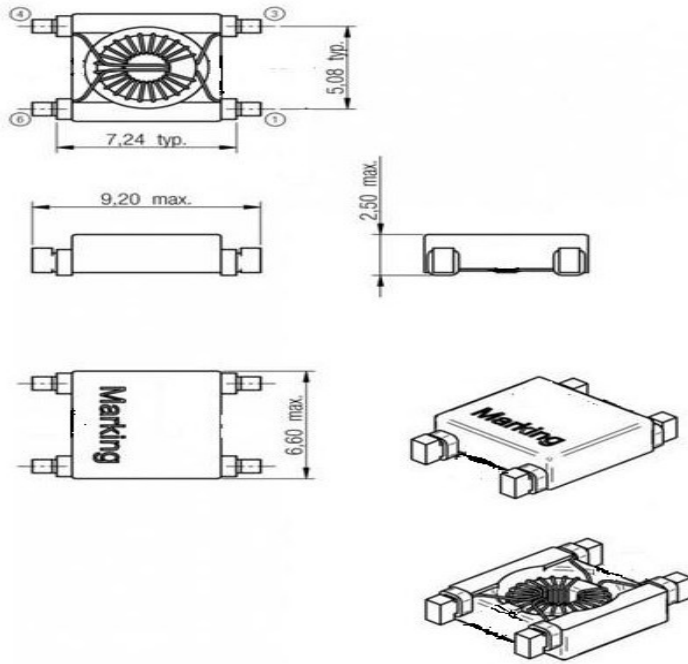
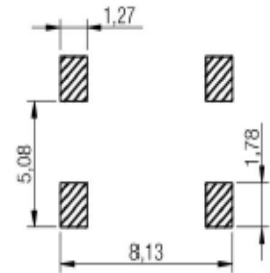


SMD Line Filter SF0903-Y Series

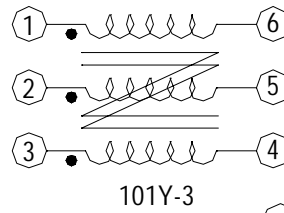
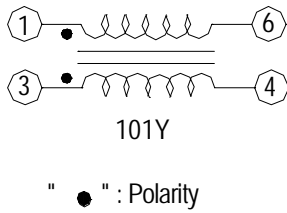
CONFIGURATION & DIMENSIONS : (m/m)



B Recommended land pattern: [mm]

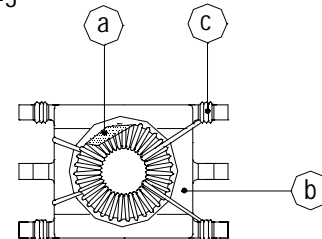


SCHEMATIC DIAGRAM :



MATERIALS :

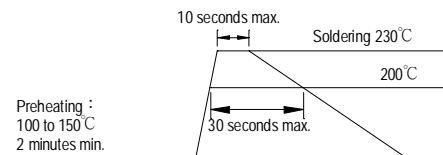
- a . Core : Ferrite toroidal core
- b . Base : Phenolic
- c . Wire : Enamelled copper wire



GENERAL SPECIFICATION :

- a . Storage temp. : -40°C ---- $+105^{\circ}\text{C}$
- b . Operating temp. : -25°C ---- $+85^{\circ}\text{C}$
- c . Resistance to solder heat : 260°C . 10 secs.

Recommended Soldering Conditions Reflow Solderings



ELECTRICAL CHARACTERISTICS :

● SF0903 -101Y Series

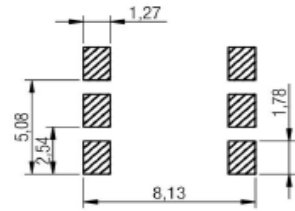
Properties	Test conditions		Value	Unit	Tol.
Inductance	100 kHz/ 100 mV	L	2x 100	μH	+50/-30%
Impedance		Z_{max}	5000	Ω	typ.
Rated current	$\Delta T = 40 \text{ K}$	I_R	500	mA	max.
DC Resistance		R_{DC}	2x 0.28	Ω	max.
Insulation test voltage		U_T	500	V (AC)	max.
Rated voltage		U_R	80	V	max.

ELECTRICAL CHARACTERISTICS :

● SF0903 -101Y-3 Series

Properties	Test conditions		Value	Unit	Tol.
Inductance	100 kHz/ 100 mV	L	3x 100	μH	+50/-30%
Impedance		Z_{max}	5000	Ω	typ.
Rated current	$\Delta T = 40$ K	I_R	450	mA	max.
DC Resistance		R_{DC}	3x 0.45	Ω	max.
Insulation test voltage		U_T	500	V (AC)	max.
Rated voltage		U_R	80	V	max.

B Recommended land pattern: [mm]



IMPEDANCE VS FREQUENCY :

