

# SMD Inductors(Coils) For Power Line(Wound, Magnetic Shielded)

Conformity to RoHS Directive

## SLF Series SLF7055

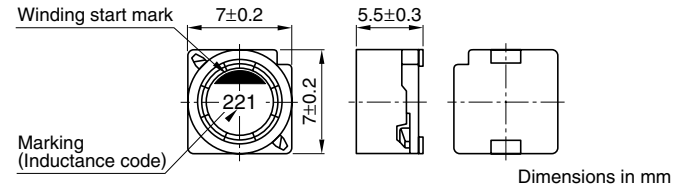
### FEATURES

- Miniature size  
Mount area: 7×7mm  
Height: 5.8mm max.
- Generic use for portable DC to DC converter line.
- High magnetic shield construction should actualize high resolution for EMC protection.
- Available for automatic mounting in tape and reel package.
- The products do not contain lead and support lead-free soldering.

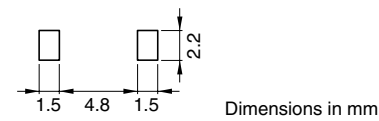
### APPLICATIONS

LCD-TVs, PDP-TVs, LCD displays, DVD recorders, HDDs, DSCs, etc.

### SHAPES AND DIMENSIONS



### RECOMMENDED PC BOARD PATTERN



### ELECTRICAL CHARACTERISTICS

Part No.	Inductance (μH)	Inductance tolerance(%)	Test frequency (kHz)	DC resistance (mΩ)	Rated current(A)*	
					Based on inductance change	Based on temperature rise
SLF7055T-1R5N4R0-3PF	1.5	±30	100	17.4±30%	6.2	4
SLF7055T-2R2N3R5-3PF	2.2	±30	100	21.7±30%	5.3	3.5
SLF7055T-3R3N3R3-3PF	3.3	±30	100	24±30%	4.3	3.3
SLF7055T-4R7N3R1-3PF	4.7	±30	100	28±30%	3.6	3.1
SLF7055T-6R8N2R8-3PF	6.8	±30	100	34±30%	3	2.8
SLF7055T-100M2R5-3PF	10	±20	100	39.1±20%	2.6	2.5
SLF7055T-150M2R1-3PF	15	±20	100	50.8±20%	2.1	2.2
SLF7055T-220M1R7-3PF	22	±20	100	64.3±20%	1.7	2

\* Rated current: Value obtained when current flows and the temperature has risen to 30°C or when DC current flows and the nominal value of inductance has fallen by 10%, whichever is smaller.

- Operating temperature range: -40 to +105°C (Including self-temperature rise)

• Conformity to RoHS Directive: This means that, in conformity with EU Directive 2002/95/EC, lead, cadmium, mercury, hexavalent chromium, and specific bromine-based flame retardants, PBB and PBDE, have not been used, except for exempted applications.

• All specifications are subject to change without notice.