

SHIELD SERIES

Lead Type EMC Suppressors

■ FEATURES

Shield beads are designed to suppress undesirable EMI radiation, unusual oscillations, and abnormal operations in a circuit. Mag Layers has developed two shield bead series, the RH-series and the R6H series, to meet your design needs. The RH and R6H series have many characteristics that are perfect for your design applications.

Effective Noise Protection

Shield beads have resistive components that are effective at absorbing high frequency noise .

Multiple Size Availability

- The RH-series shield beads are available in six compact sizes: 354508, 354708, 356008, 357508, 358008, 359008.
- The R6H-series shield bead is available in a compact size of 601085.

■ APPLICATIONS

Shield beads can be used in a variety of electronics, including:

- Televisions
- Video Equipment
- Personal Computers
- OA Equipment

■ PRODUCT IDENTIFICATION

RH-Series Product Identification

①	②	③	④	⑤	① Product Code
RH	- 3.5	x 4.5	x 0.8	□□	② Outside Dimension
					③ Length (in mm)
					④ Inside Dimension
					⑤ Pattern Code

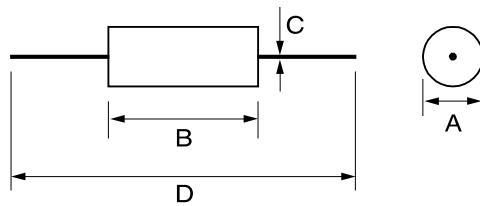
R6H-Series Product Identification

①	②	③	④	① Product Code
R6H	- 601085	- 1.5Ts	□□	② Dimension
				③ Number of Turns
				④ Pattern Code

■ **PRODUCT SPECIFICATIONS**

Part No.	IMPEDANCE (Ω)	R_{DC} (Ω) Max.	I_{DC} (A)Max.
	at 100 MHz		
RH-3.5x4.5x0.8	40	0.01	6
RH-3.5x4.7x0.8	60	0.01	6
RH-3.5x5.0x0.8	65	0.01	6
RH-3.5x6.0x0.8	70	0.01	6
RH-3.5x7.5x0.8	85	0.01	6
RH-3.5x8.0x0.8	90	0.01	6
RH-3.5x9.0x0.8	100	0.01	6

■ **PRODUCT DIMENSIONS**



	RH-354508	RH-354708	RH-355008	RH-356008	RH-357508	RH-358008	RH-359008
A	3.5 ± 0.15						
B	4.5 ± 0.3	4.7 ± 0.3	5.0 ± 0.5	6.0 ± 0.3	7.5 ± 0.3	8.0 ± 0.3	9.0 ± 0.3
C	0.65 ± 0.05						
D	Dependant on Package						

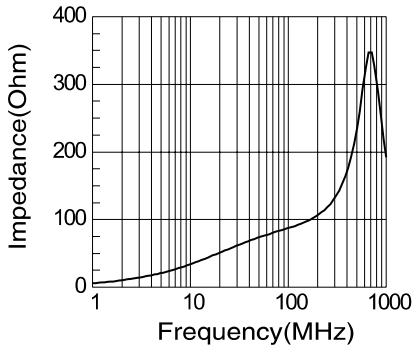
NOTE: Dimension in mm

SHIELD SERIES-RH

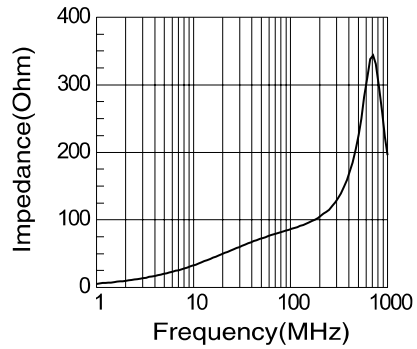
Lead Type EMC Suppressors

TYPICAL ELECTRICAL CHARACTERISTIC CURVES

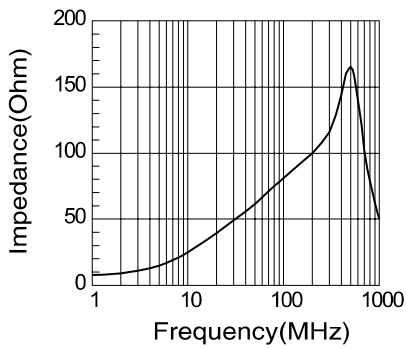
RH-3.5x4.5x0.8



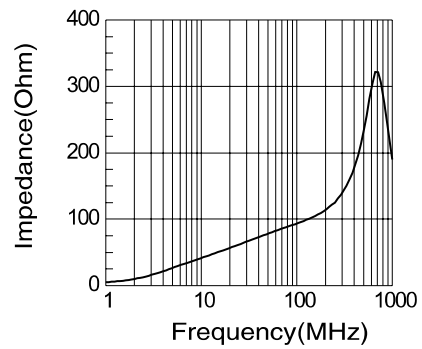
RH-3.5x4.7x0.8



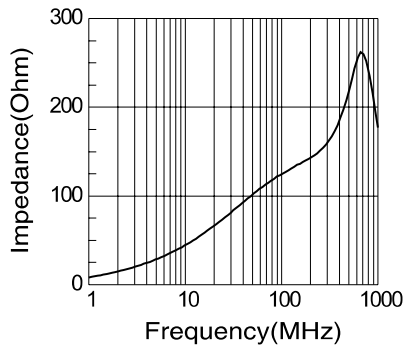
RH-3.5x5.0x0.8



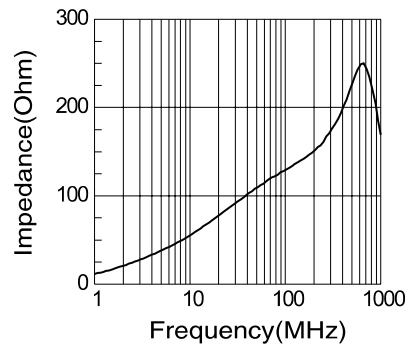
RH-3.5x6.0x0.8



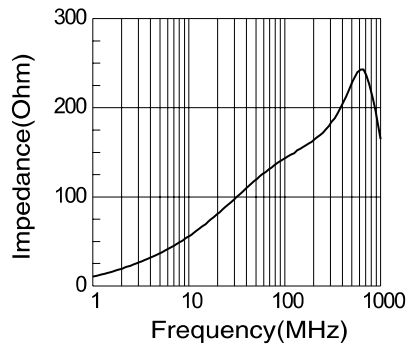
RH-3.5x7.5x0.8



RH-3.5x8.0x0.8



RH-3.5x9.0x0.8

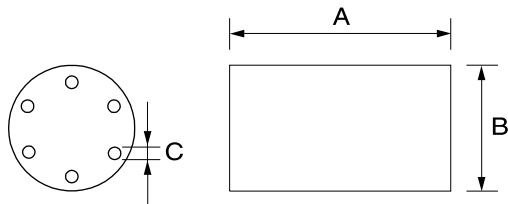


LEADED TYPE

■ PRODUCT SPECIFICATIONS

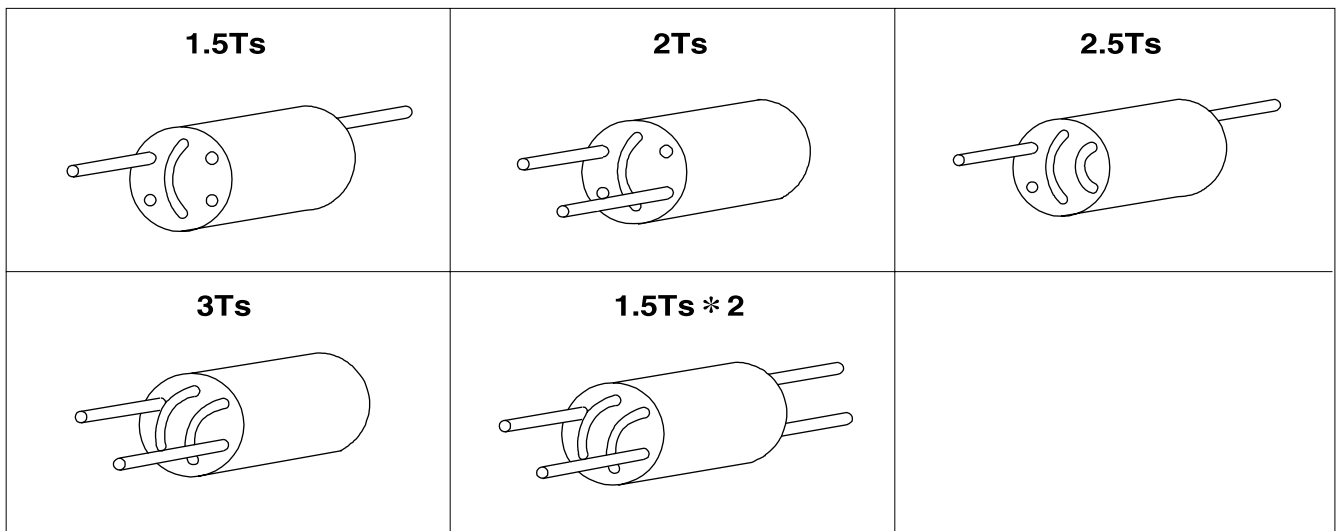
Part No.	Number of Turns	IMPEDANCE (Ω)min	
		at 25 MHz	at 100 MHz
R6H-601085-1.5Ts	1.5	200	400
R6H-601085-2Ts	2.0	300	500
R6H-601085-2.5Ts	2.5	350	550
R6H-601085-3Ts	3.0	400	700
R6H-601085-1.5Ts * 2	1.5*2	200	400

■ PRODUCT DIMENSIONS



A	10.0 ± 0.30
B	6.0 ± 0.25
C	0.9 ± 0.15
D	Lead Width

■ PRODUCT DIAGRAMS

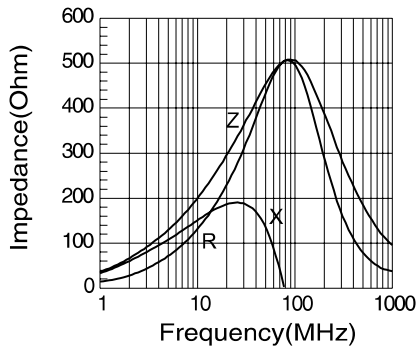


SHIELD SERIES-R6H

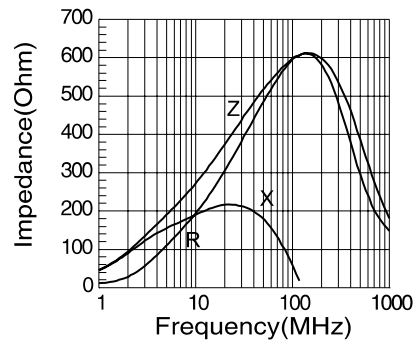
Lead Type EMC Suppressors

TYPICAL ELECTRICAL CHARACTERISTIC CURVES

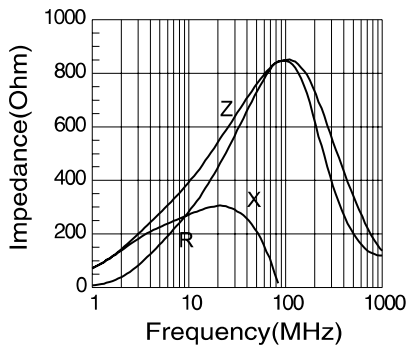
R6H-601085-1.5Ts



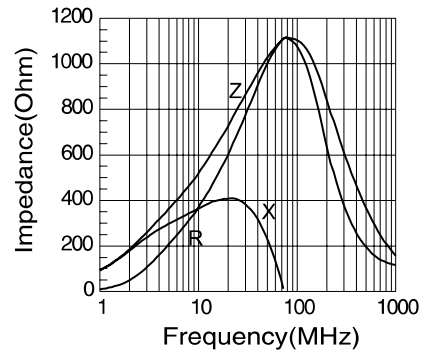
R6H-601085-2Ts



R6H-601085-2.5Ts



R6H-601085-3Ts



R6H-601085-1.5Ts*2

